

PLAYGROUND SURFACING

**PLAY
SAFETY**



駿隆橡膠工業股份有限公司

JUN LUNG

RUBBER INDUSTRIES CO., LTD



Since 1986



PLAYGROUND SURFACING

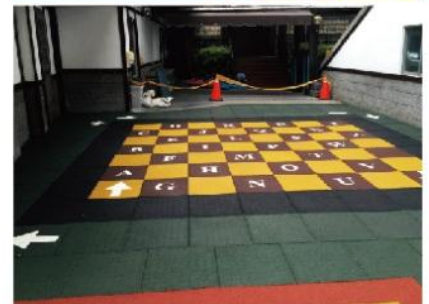
SBR RUBBER TILE

TYPE	DIMENSION	FALL HEIGHT (G-MAX<200,HIC<1000)
D011	60X60X1CM 60X60X1.5CM	X
D059	50X50X2.5CM	0.8m
D012	50X50X4.5CM	1.3m
D012	50X50X5CM	1.5m
D012	50X50X6CM	1.7m
D012	50X50X7CM	2.0m
D012	50X50X8CM	2.3m
D012	50X50X9CM	2.4m
D012	50X50X10CM	2.7m

REMARK OF FALL HEIGHT:

1-TEST OF FALL HEIGHT IS MADE AT THE CENTRE OF SURFACING MAT ◦

MATERIAL	100% RECYCLED TYRE GRANULES (SBR PIGMENT)
COLOR	BLACK 、 RED BROWN 、 GREEN YELLOW 、 ORANGE 、 BLUE 、 BEIGE 、 OTHERS



WWW.JUNLUNG.COM.TW

FEATURES:

- GREEN PRODUCTS ◦
- WATER PERMEABLE ◦
- SLIP RESISTANT ◦
- MINIMAL MAINTENANCE ◦
- ECO-FRIENDLY ◦
- EASY TO INSTALL ◦



PLAYGROUND SURFACING - DESIGN RUBBER TILE



CONTACT US TO GET MORE DESIGN TILES!

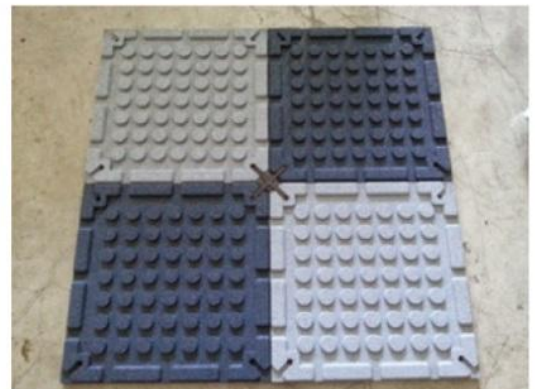
[X-LOCK]- AVAILABLE FOR RUBBER TILE OF D012 、 D059 ◦



TYPE : D001



TYPE : D002



FEATURES OF X-LOCK:

- INTERNALLY-DEVELOPED UNIQUE X-LOCK INTERLOCKING DESIGN-AVAILABLE ONLY FOR JUN LUNG ◦
- FAST AND ACCURATE INSTALLATION AND REPLACEMENT ◦
- ECO-FRIENDLY-NO GLUE REQUIRED EVEN WHEN INSTALLING ON GRASSLAND OR SOLID SURFACE ◦
- AVAILABLE FOR SMOOTH AREAS ◦



PLAYGROUND SURFACING- WET POUR



MATERIAL: SBR COLORED GRANULES / EPDM COLORED GRANULES

FEATURES:

- IMPACT ABSORBING ◦
- INJURY REDUCTION ◦
- ANTI-SLIP ◦
- ATTRACTIVE COLOR RANGE AND COMBINATIONS ◦
- IT DOES NOT REMOVE OR CURL ◦



WWW.JUNLUNG.COM.TW

OTHERS

- RUBBER RAMP ◦
- SBR RUBBER GRANULES ◦
- EPDM RUBBER GRANULES ◦
- PU CORNER GUARD ◦
- RUBBER SWING ◦
- PU ADHESIVE ◦



CONTACT US:

JUN LUNG RUBBER INDUSTRIES CO., LTD
11 GONG YE NORTH 2ND RD.,
NAN GANG INDUSTRIAL PARK,
NANTOU CITY 54066 TAIWAN (R.O.C)

TEL: +886-(0)49-2254236 ◦
+886-(0)919-714837 For English service
FAX: +886-(0)49-2256432

INFO@JUNLUNG.COM.TW
SKYPE: JUNLUNGRUBBER

WWW.JUNLUNG.COM.TW